



We hope this publication has gotten you interested in the possibility of rail. In an uncertain future riddled with high fuel prices, gain the competitive edge you need to stay in the black and thrive with the time-tested effectiveness of rail. Be an industry force to be reckoned with, and let Barron County be there every step of the way to ensure a successful endeavor into the world of rail.



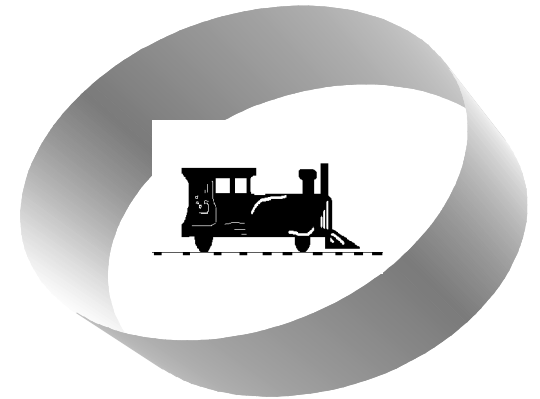
Also Available in the Series...
Barron Corridor
Town of Dovre
Town of Prairie Lake
City of Rice Lake
Town of Stanley NS
Town of Stanley EW

Contact:
www.barroncounty.com
david.miller@co.barron.wi.us
800-529-4148
P.O. Box 71
Barron, WI 54812

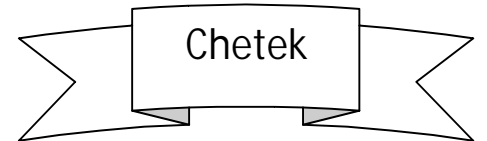
Save over \$600
per cartload!

BCEDC brochure template
Jeremy Collier 2008

BCEDC Railroad Land Development

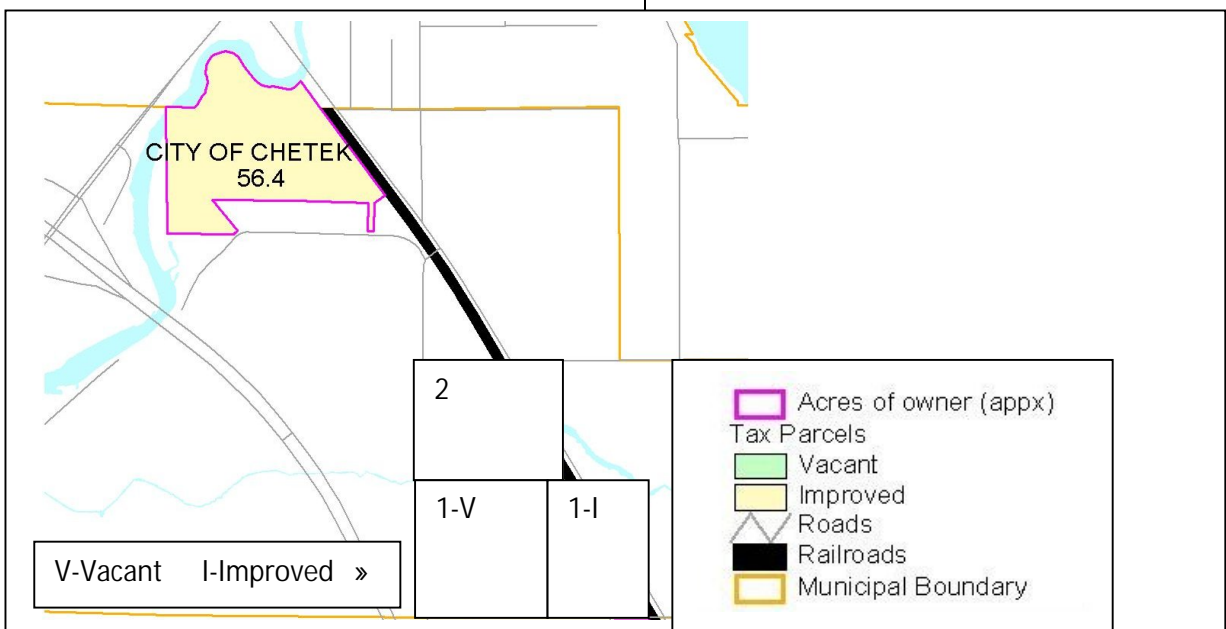


Barron County Economic
Development
The Barron County Way...
Real Choice.
Real Reasons.
Real Easy.
We put more life into your
business.



The Barron County Economic Development Corporation is committed to providing businesses with essential information about Barron County in the ongoing process of economic growth, development and expansion.

Land along the Chetek Rail Corridor. Verify borders with Plat Book.



Quick Stats

- One rail car carries the equivalent of 3 to 4 truckloads of cargo.
- \$1.4 million of products are transported by rail on this corridor each year
- 2,446 businesses were located within 5 miles of this corridor in 2006
- Railroad meets FRA I standards
- Rail transport is more fuel efficient than trucking

Owner	ACRES	TOTLAN	TOTIMP
CITY OF CHETEK	56.930	\$0.00	\$0.00
Parcel 1-Vacant	17.570	\$20,700.00	\$126,800.00
Parcel 1-Improved	38.710	\$9,200.00	\$0.00
Parcel 2	36.960	\$25,300.00	\$152,000.00



All properties are not necessarily for sale.

Automated Building Components, Inc (ABC) of Chetek saves an estimated \$250,000 per year by choosing rail over truck.